

South Milwaukee School

South Milwaukee School District
South Milwaukee, Wisconsin
Project Initiation Date: March 2003

Ecological Goals

- Use alternative storm water management strategies to increase infiltration, decrease runoff pollutant loads and decrease infrastructure costs
- Restoration and enhancement of degraded Rawson Woods and protection of endangered species
- Use formal native plantings to beautify new building expansion and decrease maintenance costs

Project Results

- Recipient of the EPA's 2006 Conservation & Native Landscaping Award

Project Statement

Applied Ecological Services (AES) was retained by the South Milwaukee School District to prepare a master landscape plan—including an ecological restoration plan and a planting plan—for the new South Milwaukee Middle School and High School Campus. The project site includes property owned by the South Milwaukee School District and property leased by the district from Milwaukee County. The campus includes a new high school adjacent to the existing high school, as well as additional parking lots, athletic fields, a football stadium and tennis courts.

The site is unique because a state endangered perennial—bluestem goldenrod (*Solidago caesia*)—as well as the state threatened Butler's gartersnake (*Thamnophis butleri*) are known to exist at the site. These two species populations directly affected development plans for the site.

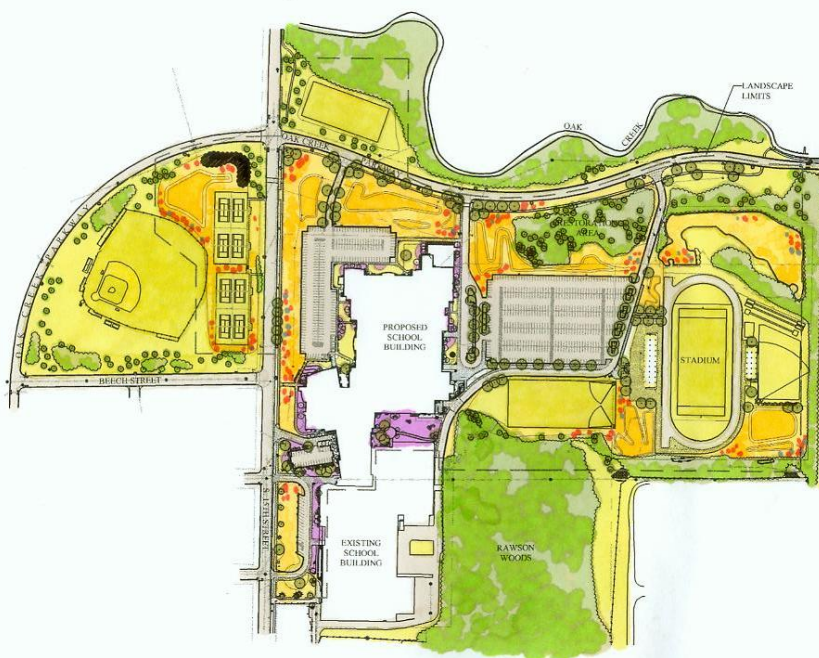
AES ecologists worked with the DNR and the school district to develop a Stormwater Treatment Train™ stormwater management system and restoration plans for the site as well as the adjacent Rawson Woods, a high-quality woodland.

The design team at Applied Ecological Services worked to develop a planting plan that would compliment the

new architecture of the school building while providing an aesthetically pleasing landscape interest throughout the year. AES Contracting Services completed all of the installation and continues to do maintenance and outreach today.

Current Status

- Design, restoration and construction are complete. Monitoring of endangered species and restored natural areas continues.



For more information, please
reference

<http://www.appliedeco.com>

